



The Concord

Landscaping Committee Photo Journal

July 19, 2021

An
amazing
location



View from the front door

Not all that impressive
nor representative of
a luxury condo



The entrance to the Concord



The
driveway
to the
front door



Missing tiles



The front entrance flower box



Behind the
wall at the
entrance



Plants died in 2019

Replaced
with rocks



Front
entrance
to the
garage



Construction
damage
never
repaired



A few grass
plants
at the
entrance
to the
garden area



Garden
at the
entrance to
the guest
parking and
owners
garage



Garden
at the
entrance to
the guest
parking and
owners
garage

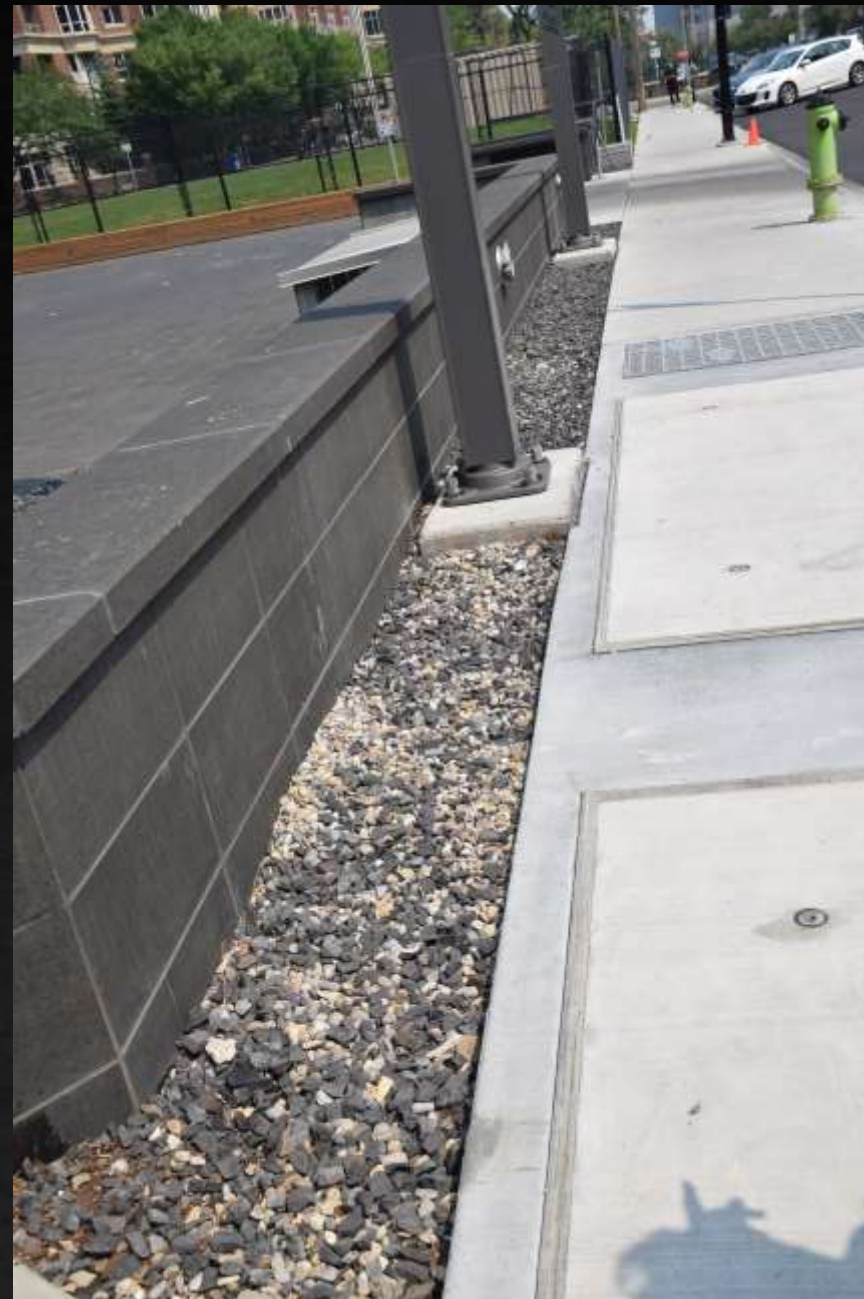


July 19
Green
Meadows
Landscaping
removing
dead trees



Plants died and replaced with gravel

but used mixed stones
that do not match.



Front of
the
building
slate wall
never
clean



Walls on
the front of
the building
covered
with dirt



Dead
plants
removed
and
replaced
with rocks



Rock
garden at
front
entrance
to the
Concord



Weeding required

People walking east
on First Street this is
their first view of the
Concord



Mixing
ground
cover
mulch and
rocks



Unattended
bushes not
being
watered



Pruning
required
by
gardeners

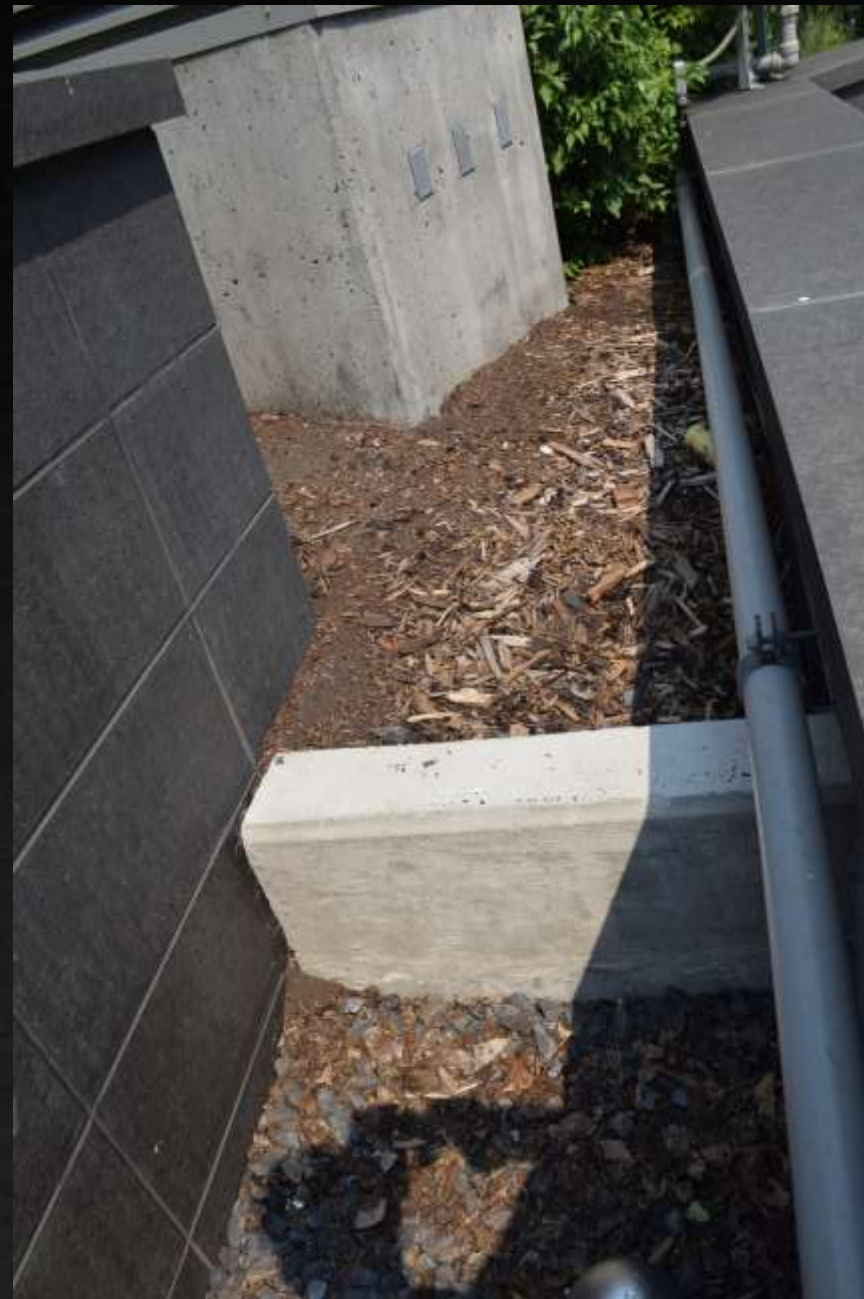


Dead plants removed in 2020 and never replaced

just covered up
with mulch



Plants
removed
and never
replaced



Dead
plants
removed
in 2021
and never
replaced

just covered up
with mulch



Dead
plants
removed
in 2020
and never
replaced

just covered up
with mulch



Plants
never
cared for
and dirt
never
washed off
the wall



Trees continuing to die

In need of pruning
and watering



Irrigation junction boxes not installed

just covered up
with a cap



Dead plants removed in spring 2021

Replaced with mulch



Forgot to plant anything

Just left as a
pile of dirt



Drain
covers
on all
walkways
are rusting



Example of
filtration
insulation
separating
from the
building



Removed
tree but
not the
roots and
never
replaced



Removed dead plants in 2020

Covered up empty
holes with mulch



Weeding
required



Fencing
not level
and
weeding
required



Willow scrub bushes

Not in keeping with
any other plant on
the property



Fountain is not level

plantings, plus fencing
on both sides of
the fountain are
not balanced



Rocks are not part of the design

and not needed if
fencing was done
properly. The level of
the fencing should be
the same as the gate.
Planting material is
also missing



Entrance to the property from the Peace Bridge



Rocks are too high

nothing was planted to soften the addition of the retaining wall.
Just gravel, rather than mulch



Planting
against the
waterfall
wall
should be
balanced
in design



Fountains
are
lackluster



Fountain
upgraded
recently



Fountain
doesn't
work



Plants in
front of
the hedge
were
removed
and never
replaced



Walkway
flag stones
set in mud



Firepit
rusting
and
garbage
left on the
side of it



Broken
stones and
dirt
around
the
Concord
logo bench



Scrub
grass used
in the
garden
and mulch
washed
away



Irrigation
pipes
exposed
along
pathway



Cleaning
around the
BBQ less
than
satisfactory



A poor
example of
a lush
garden in a
high traffic
area



Planting
material is not
representative
of a premium
building



Water leaking from the pond

Mosquito breeding
ground. Needs to be
fumigated.



High traffic
walkway
with mud
and no
ground
cover
planting



More dead
plants
around
the pond



Do not
close this
in and turn
it into a
closed
garage



Stop using
the front
garden to
store
leftover
supplies
from the
winter



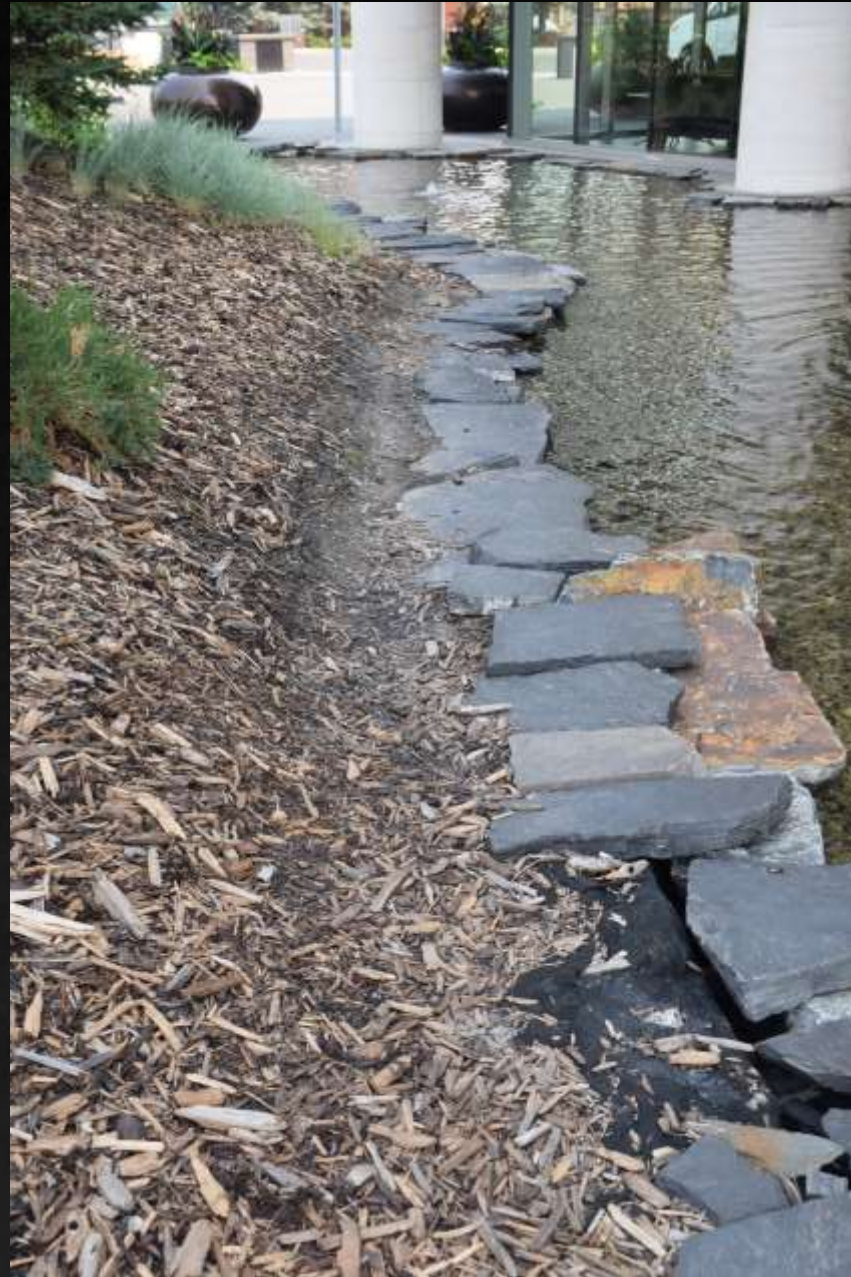
Cut down
dead trees



Boarder
rocks
along the
path falling
into the
pond



Using this
as a
footpath
has
damaged
the area



Straighten the trees

They should have been staked when planted



Tile grout
in the
social area
is pitted
and
stained



Dirt on the
tile is not
acceptable



Remove
dead trees



The
cement
walk is
crumbling
and not
level



Gates were
not installed
inline with
the cement
retaining
wall

This was an after
thought - not part of
the architect design



Plant
removed
in 2020
and never
replaced



Ground
cover is
sparse



The trees are falling over

There is not enough
soil to support these
trees and the root
system is invasive



Removed a
tree and left
the trunk. No
replacement
planted



Plants died
and not
replaced



Removed
dead
plants in
2020 but
not
replaced



Different sized trees planted

along the main owner entrance into the building.
Rusty drain cover.



Weeding
needed



Weeding
required in
green
spaces



Million
dollar view
of a
construction
trailer

